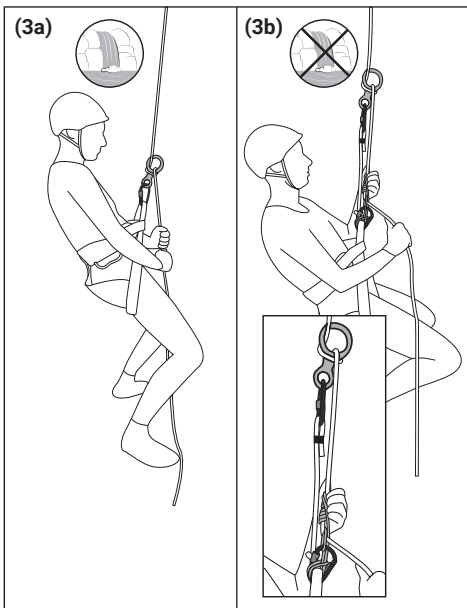
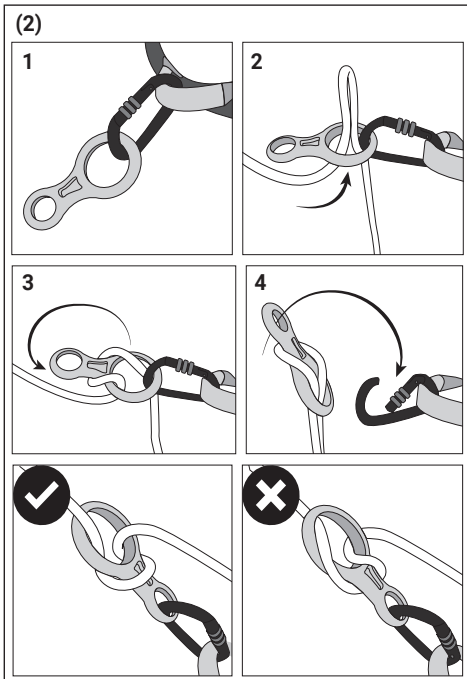
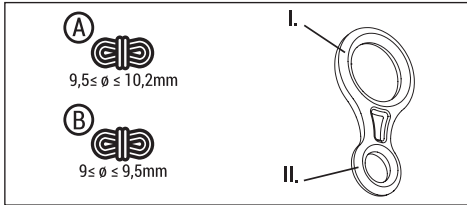


WARNING

- WARNING: Before use, read and understand all english instructions.
- WARNING: Any misuse of this protective equipment can cause serious injuries or death.
- WARNING: Using a damaged or modified belay device can cause serious injuries or death.
- WARNING: Climbing and mountaineering are inherently dangerous.



EN - BRAKING DEVICE - 8 MK 100

PLEASE NOTE: TRAINING IS ESSENTIAL

Before using this device, you must read and understand the user instructions. This user guide was drafted in compliance with Standard EN 15151-2:2012 pertaining to manual braking devices.

1-PARTS(Figure 1)

- I. Large ring
- II. Small ring

2-GENERAL INFORMATION / COMPATIBILITY

This braking device complies with standard EN15151-2:2012. It is designed for canyoning, to be used with semi-static ropes that meet standard EN1891:1998 with a diameter between 9 and 9.5mm for B-type ropes and 9.5 and 10.2 mm for A-type ropes, and locking carabiners that meet standard EN12275:2013. According to this standard it is a Type 1 device for: abseiling device without friction adjustment system. Warning, this is not an autolocking device. It is crucial to never let go the «life line» (free end of the rope between the belay device and the ground), and to constantly check it in your hand: Risk of potentially fatal falls. This braking device has been designed to be used with personal protective equipment against falls from a height that meet currently applicable standards. Harnesses certified under standard EN12277:2015 + A1:2018 are the only body support equipment authorised for canyoning. Make sure that your device is compatible with the other elements in the belaying system. Harnesses often have different characteristics, make sure that you attach the belay device in compliance with the harness manufacturer's instructions. During a descent on 2 ropes, they must be the same diameter. The commercial diameters given for ropes have a tolerance of up to ± 0.2mm. The diameter of a rope and other characteristics may vary depending on use. The braking provided by your product varies dependent on the diameter of the rope used, its sliding properties, and its state of wear; a new rope may slide more. The braking capacity of your product may be reduced when the rope is damp, wet (often occurs when canyoning) or frozen. It is the user's responsibility to familiarise themselves with the available braking effects before each use. Don't hesitate to add braking. Thin ropes require more experience to use than large diameter ropes as they are harder to lock when abseiling. The shape of the carabiner used with the device affects the braking. We recommend using HMS shaped carabiners. Train yourself on handling your appliance in a safe area and familiarise yourself with how it reacts with the ropes you are using. Ensure that your hair, clothing and hands do not get caught in the braking device when using it, to prevent serious injury. Don't forget to visually check all knots on the belaying system before using the braking device.

3-TRAINING

This device must only be used by experienced trained persons or under the direct supervision of experienced trained persons. If you have not undertaken the relevant training, do not use this equipment. Canyoning is a dangerous activity. You are responsible for learning the techniques required for undertaking these activities, as well as the correct use of the equipment. It is not possible to list all possible incorrect uses of this product. Generally speaking, uses which differ from those described herein are prohibited. Failure to respect any of the warnings may result in serious injury or death. The updated version of this user guide can be found on our support site:

<https://support.decathlon.fr/languages>

4-HOW IT WORKS

4.1. Installing the harness (Figure 2)

Pass a locking carabiner through the large ring (I), then connect it to the harness tie-in point. Insert a rope loop in the large ring, then pass it over the small ring (II).
- Remove the large ring from the carabiner and clip it on the small ring. Finally, lock the carabiner. Refer to the diagram on the product to avoid a mistake and to reduce the risk of tying a larks foot knot. Check that the carabiner's thimble faces the user.

4.2. Abseiling (Figures 3a and 3b)

Refer to paragraph 3.1 to fit the system to the harness. Before putting the belaying system under tension, check that the braking system is fitted correctly to the carabiner. When canyoning, it's essential that you fit a releasable system. A releasable system can also help to manage rope friction. The user must take into account clearance (free space below the feet that is free from obstacles) to control their descent safely and to identify whether there are any risks of water spray/immersion. When descending under or through a waterfall (wet descent - Figure 3a), do not use a friction hitch that could get stuck, leading to a drowning risk. Make sure to keep a firm hold on the rope, as the system isn't auto-locking! In the case of an abseiling without waterfalls (Figure 3b), without risk of ending up immersed, you can use a back-up belay system (friction hitch) to limit the risk of accident in cases when the user is forced to let go of the rope. It's also possible to back-up belay from the bottom if the top of the abseil line is limited, and if you can keep a visual check on the person belaying. During a lengthy and rapid descent, there is the risk of the belaying system overheating which could, in the worst cases, damage the rope, the harness and cause burns.

5-INSPECTING THE PRODUCT

Before, during and after use, check that the equipment is in good order: Check that there are no cracks, distortions, corrosion, wear or any other damage. Check that there are no sharp edges caused by wear that could damage the rope. If you have any doubts about the condition of your equipment, or if your product has a defect, destroy it to ensure that it is not used again. A more detailed inspection should be carried out at least once a year by a qualified person. After a serious fall, your product and all other equipment in the belay system must be withdrawn from service. The safety of the user depends on maintaining the product's effectiveness and strength.

6- CLEANING, CARE AND STORAGE

This braking device must be cleaned with water and dried away from sources of heat. Store in a dry, cool and ventilated place, away from the light. Avoid any contact with chemical products (acids, bleach, petrol, diesel, solvents, etc.) which may damage the product's strength and/or its braking effect. When it has been in contact with seawater or a marine environment, rinse, dry the equipment. Long-term storage of your equipment in bad conditions may make it unseizable. Check the condition of your equipment before each use (see paragraph 5). Any repair or modification to the product is strictly prohibited.

7- Lifespan

The lifespan of this braking system is not limited. The real lifespan of your product depends on the frequency of use and conditions of use unique to each user. In normal conditions of use and maintenance, we recommend using this braking system for 3 to 10 years. The life span may be reduced to a single use in the event of the product enduring a big fall, in the event of intensive use involving abrasion or in the event of the product being exposed to chemical products or extreme temperatures. Age may render this equipment unseizable. However, for as long as the device meets quality control standards, it does not need to be replaced. If you have any queries on the status of the product, have a competent, trained person check it or destroy it.

8- WARRANTY

This braking device is guaranteed 2 years from the date of purchase for all manufacturing defects. Normal wear, oxidation, as well as any damage caused by misuse or modification of the product are excluded from the warranty.

9- MEANING OF MARKINGS

: Refer to the instructions before using this equipment
UIAA : this product complies with the UIAA 129 safety label
XXMMYY : traceability number. The first 2 digits correspond to the batch number, and the following 4 indicate the month and year of manufacture.

8MK100 : name of product

: SIMOND logo (Manufacturer)

: DECATHLON logo, parent group of the SIMOND brand.

EN 15151-2:2012: braking device complies with standard EN 15151-2:2012



: Rope pathway

\varnothing_{min} \varnothing_{max} : Minimum and maximum rope diameter that can be used with the device

www.supportdecathlon.com